

# UltraTech SEAL & DRY

Multipurpose Acrylic Binder

5 PLUS



Series: SD5P0012  
Month: September 2019  
Supersedes all earlier TDS

SEAL & DRY 5 PLUS

ULTRATECH

## Description

UltraTech **SEAL & DRY 5 PLUS** is an acrylic polymer-based which can be used as a waterproofing agent, anti-corrosive protection coating, key/priming coat, crack filler, tile joint filler.

## Features & Benefits

- Easy and simple-to-use
- Provides excellent water impermeability
- Ensures good workability
- Provides good bonding and adhesion
- Provides toughness and flexibility
- Excellent material for repair and renovation

## Areas of Application

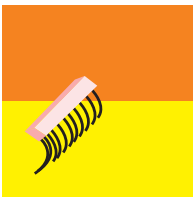
UltraTech **SEAL & DRY 5 PLUS** is recommended for standard/general waterproofing of bathrooms, sunken areas, terrace and water tanks. It is recommended for crack filling and tile joint filling by mixing along with white cement.

It can be used by mixing with water, directly as a priming/key coat over plastered surfaces and putty before painting to cover the minor surface shrinkage cracks.

UltraTech **SEAL & DRY 5 PLUS** can also be used as an anti-corrosive protection coating over new and old reinforcements.

## METHOD OF APPLICATION

### Surface Preparation



- Prepare the surface by removing oil, bond inhibiting agents, dirt, dust and laitance
- Clean the surface with wire brush/water jet/mopping
- Wet the surface with water and bring it to surface saturated condition
- Corroded reinforcement bars should be exposed, cleaned and treated with an anti-corrosive product

### Application



#### As a waterproofing coat

- Apply mix of UltraTech **SEAL & DRY 5 PLUS** with grey cement in the ratio as per the table given on the next page



#### Anti-corrosive rebar coating

- Apply mix of UltraTech **SEAL & DRY 5 PLUS** with grey cement, in ratio as per the table given on the next page, entire surface of exposed and cleaned reinforcement by brush as anti corrosive treatment



#### Crack Filling

- Apply the mix of UltraTech **SEAL & DRY 5 PLUS** with white cement in ratio as per table on prepared and cleaned grooved cracks (6mm X 6mm "V" groove) with putty blade



#### Tile Joint Filling

- Fill the mix of UltraTech **Seal & Dry 5 PLUS** with white cement in ratio as per the table on tile joint with putty blade



#### Priming/Key Coat

- Apply the mix of UltraTech **Seal & Dry 5 PLUS** with good quality water in ratio as per the table on prepared surface by brush for priming/key coating

## TECHNICAL DATA AS PER RELEVANT IS AND ASTM STANDARDS

Solid content: 50% ± 1% by weight in the solution

pH value: 7 to 8

Description	Anti-corrosive Rebar Coating	Waterproofing	Crack Filling	Tile Joint Filling	Priming/Key Coat (50% water by wt)
Mix Ratio - Seal & Dry 5 PLUS: Grey Cement	1:1.5	1:3:8 (S&D 5 Plus, Water & Cement)	-	-	1:0.5
Mix Ratio - Seal & Dry 5 PLUS: White Cement	-	-	50 ml per 1 Kg of white cement	100 ml per 1 Kg of white cement	1:0.5
Coverage/Kg	75 RMT @ 1mm thickness for 10mm dia Bar.	100 sq.ft./Kg @ 1mm Thickness	85 RMT @ (6mm X 6mm "V" Groove)	250 RMT @ (2mm X 6mm Tile Joint)	75 sq.ft./Kg in single film coat

Note: The adhesion strength between concrete/plaster and reinforcement is not hampered by using UltraTech **SEAL & DRY 5 PLUS**.

### Safety Directions

- UltraTech **SEAL & DRY 5 PLUS** is non-toxic. Use of gloves and goggles recommended. Any splashes to the skin or eyes should be washed off with clean water
- In case of prolonged irritation, medical advice should be sought. UltraTech **SEAL & DRY 5 PLUS** is non-flammable

### Packaging

1 Kg, 5 Kg, 10 Kg, 20 Kg

### Shelf Life

- UltraTech **SEAL & DRY 5 PLUS** has a shelf life of 18 months from the date of manufacture. Store at a cool and dry place

### Other Product Categories available with UltraTech Building Products Division

- Tile Adhesives
- Micro Concrete and Repair Mortar
- Industrial/Precision Grout and Anchors
- Injection Grouting Material
- Plasters and Jointing Mortar
- Floor Screeds & Masonry
- Autoclaved Aerated Lightweight Concrete Blocks

#### DISCLAIMER

Information provided on this data sheet is the guideline for usage. Users are advised to undertake a trial for product suitability prior to its full scale usage. There is no implied guaranty/warranty for the results and the company is not liable for any consequential damages.



#### UltraTech Cement Limited (Building Products Division)

Regd. Office: 2<sup>nd</sup> Floor, B-Wing, Ahura Centre, Mahakali Caves Road, MIDC, Andheri (East), Mumbai - 400 093, India | Email: [ultratech.care@adityabirla.com](mailto:ultratech.care@adityabirla.com)  
Website: [www.ultratechcement.com](http://www.ultratechcement.com) | Toll Free: 1800 210 3311

